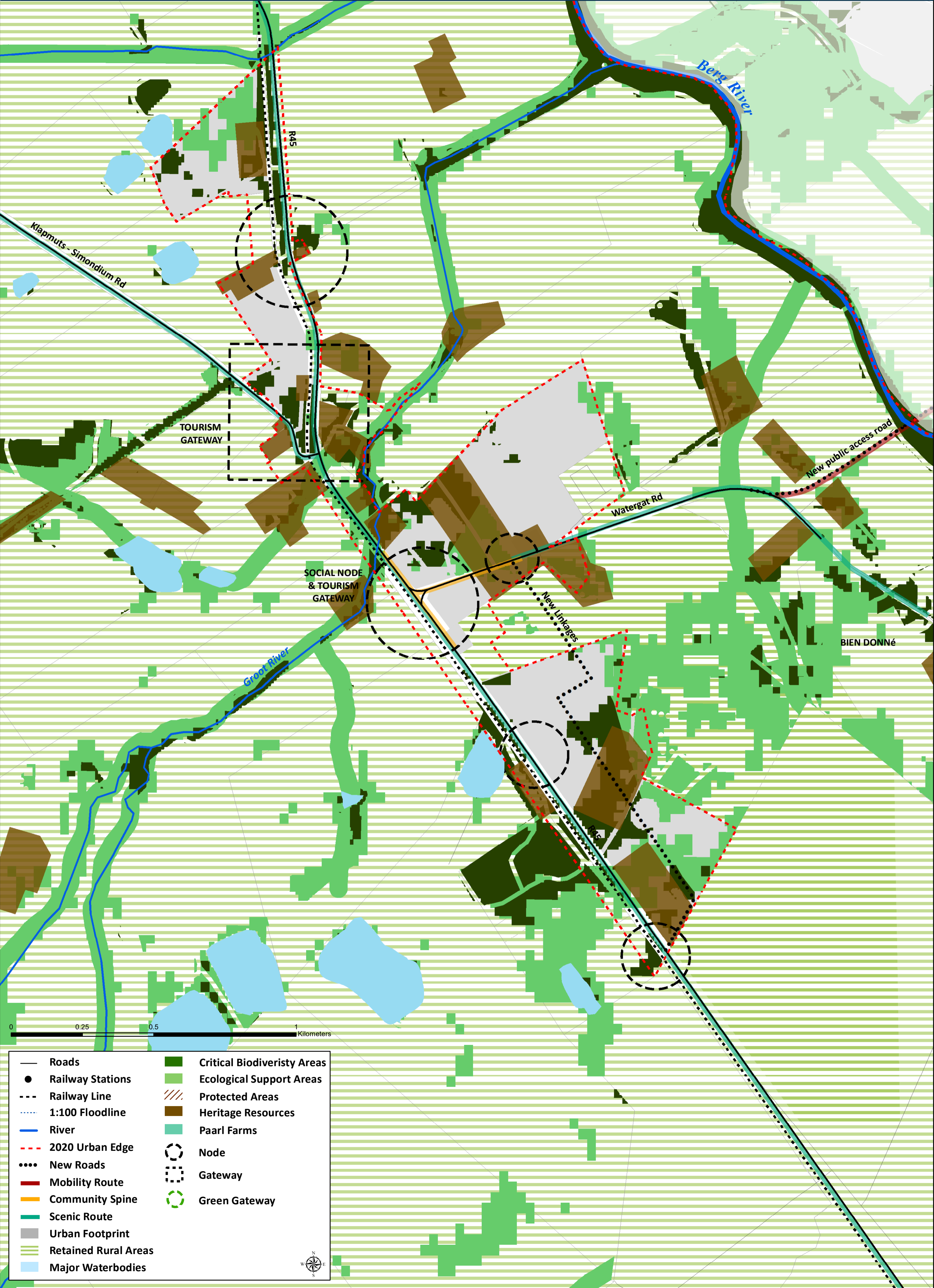


FA5 SIMONDIUM: ENVIRONMENTAL & HERITAGE IMPLICATIONS



- | | | | |
|-------|----------------------|-----|-----------------------------|
| — | Roads | ■ | Critical Biodiversity Areas |
| ● | Railway Stations | ■ | Ecological Support Areas |
| - - - | Railway Line | /// | Protected Areas |
| ⋯ | 1:100 Floodline | ■ | Heritage Resources |
| — | River | ■ | Paarl Farms |
| - - - | 2020 Urban Edge | ○ | Node |
| ⋯ | New Roads | □ | Gateway |
| — | Mobility Route | ○ | Green Gateway |
| — | Community Spine | | |
| — | Scenic Route | | |
| ■ | Urban Footprint | | |
| ■ | Retained Rural Areas | | |
| ■ | Major Waterbodies | | |

