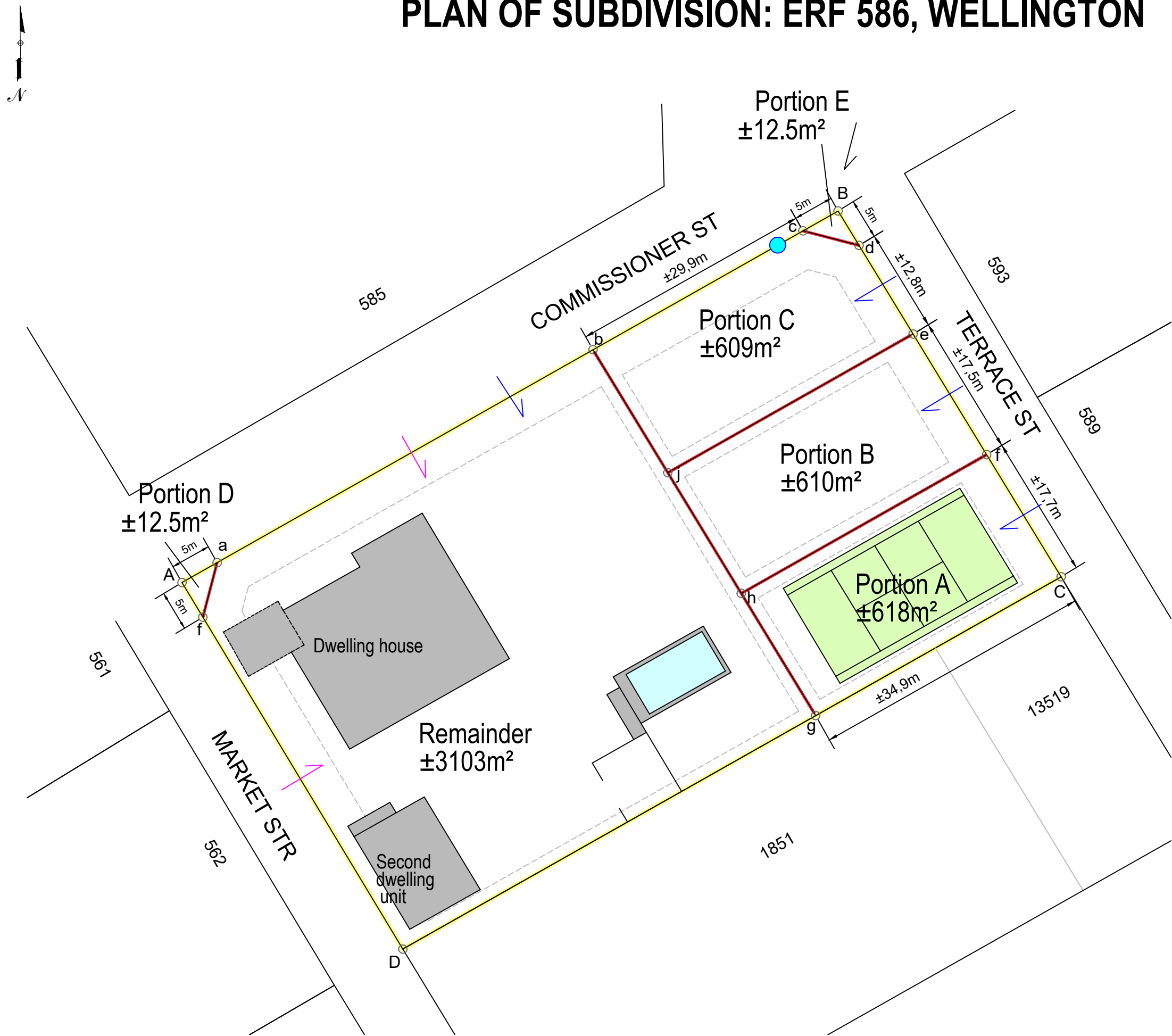


PLAN OF SUBDIVISION: ERF 586, WELLINGTON



NOTES:

Figure **A B C D** represents Erf 586 Wellington which measures $\pm 4965\text{m}^2$. Erf 586 is to be subdivided into:

a) Portion A ($\pm 618\text{m}^2$) represented by Figure **f C g h**

b) Portion B ($\pm 610\text{m}^2$) represented by Figure **e f h j**

c) Portion C ($\pm 609\text{m}^2$) represented by Figure **b c d e j**

d) Portion D ($\pm 12.5\text{m}^2$) represented by Figure **A a f**

e) Portion E ($\pm 12.5\text{m}^2$) represented by Figure **B c d**

f) Remainder ($\pm 3103\text{m}^2$) represented by Figure **a b j h g D f**

Subdivision line	
Tennis Court	
Swimming Pool	
Existing buildings	
Proposed vehicle access	
Existing vehicle access	
Existing pedestrian access	
Existing water connection	

Drawing by:
NJ de Kock

ALL AREAS AND DISTANCES ARE SUBJECT TO SURVEYING



C.K. RUMBOLL & VENNOTE
TOWN PLANNERS
PROFESSIONAL SURVEYORS
16 RAINIER STREET, MALMESBURY
Tel: 022 - 4821845
Fax: 022 - 4871661
Email: leap@rumboll.co.za

DATE:
April 2022

AUTHORITY:
SWARTLAND MUNICIPALITY

REF:
WEL/12466/NJdK

SCALE: 1:500 - A3